



FC040

**MEADOW BANK COTTAGE LE MONT DES
CHARRIERES, ST PETER, JERSEY, JE37ZQ**

Asking Price

£599,000

Property details

FREEHOLD - A fully renovated two-bedroom cottage, tucked away in a gem of a location along a quiet country lane in St Peter.

The accommodation is arranged as follows: the ground floor features a welcoming lounge complete with a wood-burning stove, alongside a modern kitchen fitted with contemporary appliances and a breakfast bar. On the half-landing sits the stylish shower room, while the first floor offers two well-proportioned double bedrooms.

Externally, the property benefits from a car port providing one parking space. Steps lead up to a decked seating area, which in turn opens onto a generous, fenced garden backing onto open agricultural land, offering both privacy and a pleasant rural outlook.

Early viewings are highly recommended to fully appreciate this charming home and its desirable setting.

Outside

South/west facing private garden.

Carport for 1 car.

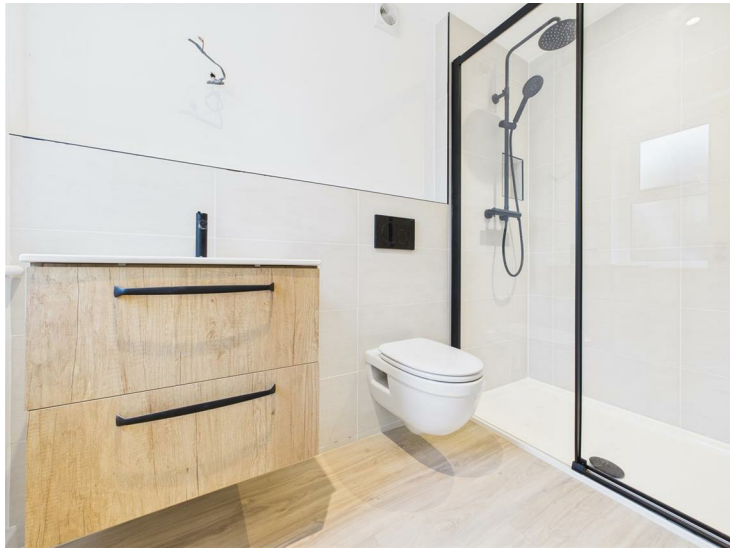
Services

Electric underfloor heating in all rooms.

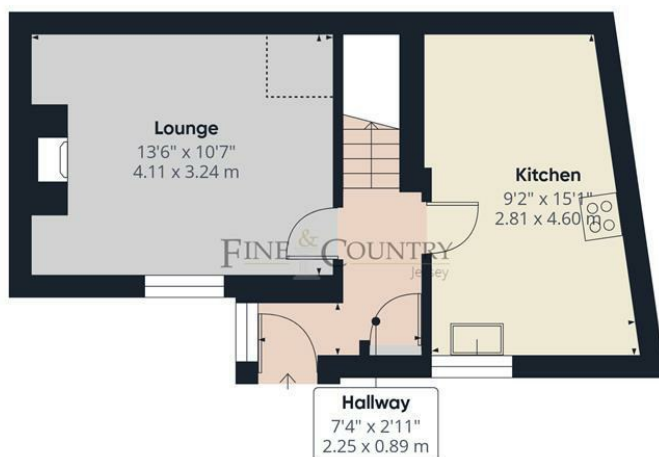
Wood burning stove.

Directions

From Les Charrieres Care Home follow the road down past the car park and the cottage is the first property on the left hand side.







Ground Floor



Floor 1



Approximate total area⁽¹⁾

660 ft²
61.3 m²

Reduced headroom

66 ft²
6.1 m²

(1) Excluding balconies and terraces

Reduced headroom

Below 5 ft/1.5 m

Calculations reference the RICS IPMS 3C standard. Measurements are approximate and not to scale. This floor plan is intended for illustration only.

GIRAFFE360

Call us on

01534 888855

jersey@fineandcountry.com

www.fineandcountry.je

5 King Street, St Helier, Jersey, JE2 4WF

MONEY LAUNDERING REGULATION - Once an offer is accepted and negotiations for the purchase of a property are entered into, the prospective purchasers will be asked to produce photographic identification and proof of residency documentation, e.g. current utility bill and ID. This is in order for us to comply with the current Money Laundering Legislation.

Fine & Country Jersey advises prospective purchasers that we have prepared these sales particulars as a general guide only. We have not carried out a detailed survey, nor tested the services, appliances and specified fittings. Room sizes are approximate and rounded; they are taken between internal wall surfaces and therefore include cupboards/shelves etc, accordingly they should not be relied upon when purchasing fittings. Carpet, curtains/blinds and kitchen equipment, whether fitted or not, are deemed to be removable by the vendor unless specifically itemised within these particulars and/or within the property inventory. These particulars are supplied on the understanding that all negotiations are conducted through Fine & Country Jersey, their accuracy is not guaranteed nor do they form part of any contract.